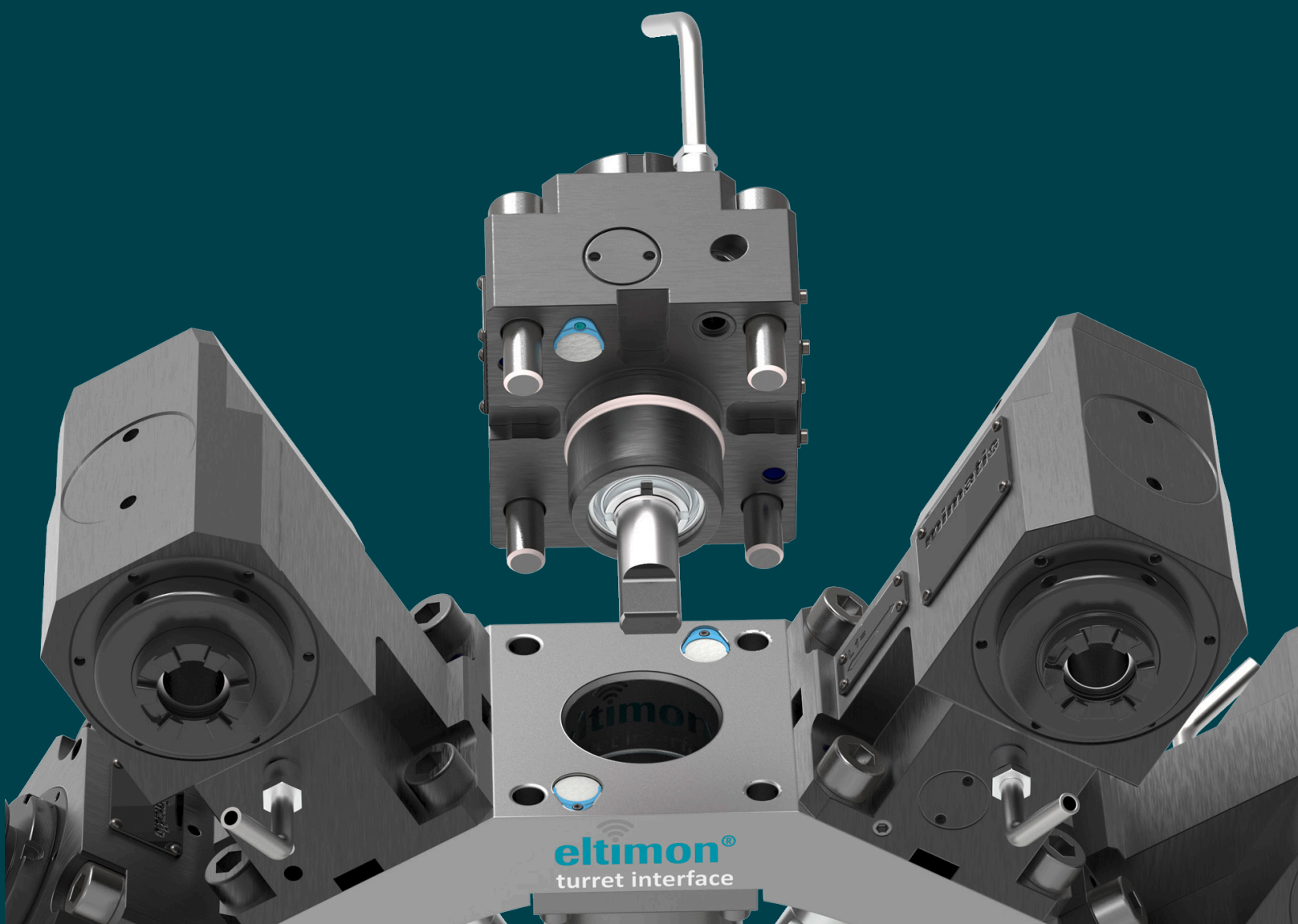


Wireless Sensor Control and Entire Ecosystem

# Free Your Tool Monitoring



## Cost Advantage

Maintenance

Efficiency

Manpower

Tool life

Crash prevention



[www.eltimon.de](http://www.eltimon.de)

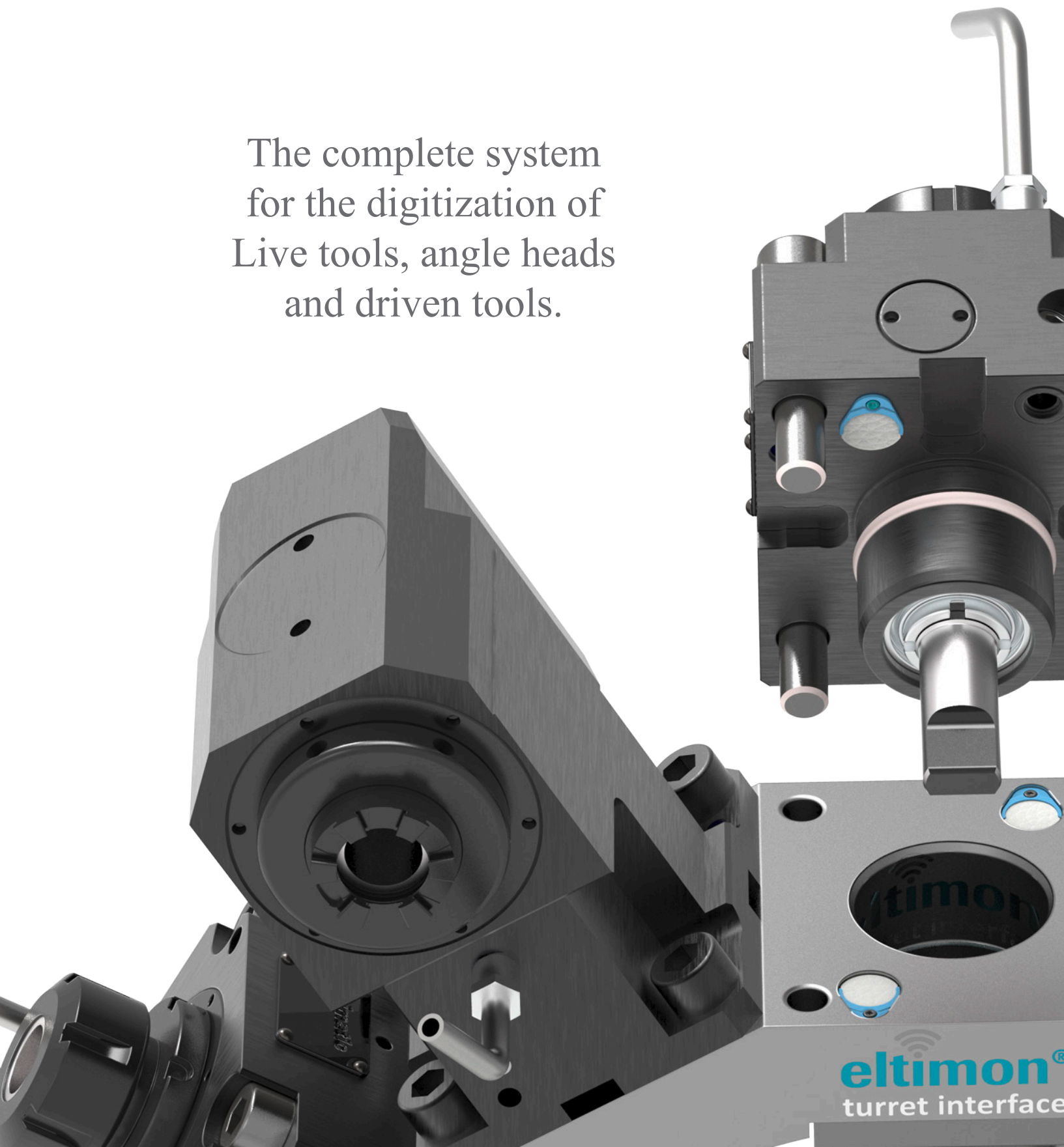
INDUSTRY  
4.0

Wireless Sensor Control and Entire Ecosystem

# Free Your Tool Monitoring



The complete system  
for the digitization of  
Live tools, angle heads  
and driven tools.



**eltimon**<sup>®</sup>  
turret interface



### **eltimon Turret Interface**

- + Wireless power transmission
- + Wireless data transfer





Digitization for Complete Tool Management

# Highly Integrated Sensor System for Most Effective Productivity



Wireless data transfer\*  
directly via eltimon Reader  
or eltimon smart gateway to  
the eltimon® service portal  
and/or to the machine.



Proactive Action Instead of Expensive Reactions

# Process Data Acquisition and Evaluation



**Basic Data**  
Detailed information of  
the used tool



**Operating Hours**  
Accumulated operating hours  
since tool use



**Tool Temperature**  
with limit warning  
for critical areas



**Revolution Informations**  
Detailed usage values  
and recorded speed ranges



**Load Cycles**  
For example the number of  
holes drilled



**smart Gateway**  
Usage close to the machine area  
Power supply and internet connection



**Vibration Control**  
Tool breakage and downtime  
prevention



**eltimon Turret Interface**  
+ Wireless power transmission  
+ Wireless data transfer



## eltimon® ecosystem

Evaluations

Analyses

Trends and conditions

Limit warnings

Decision support

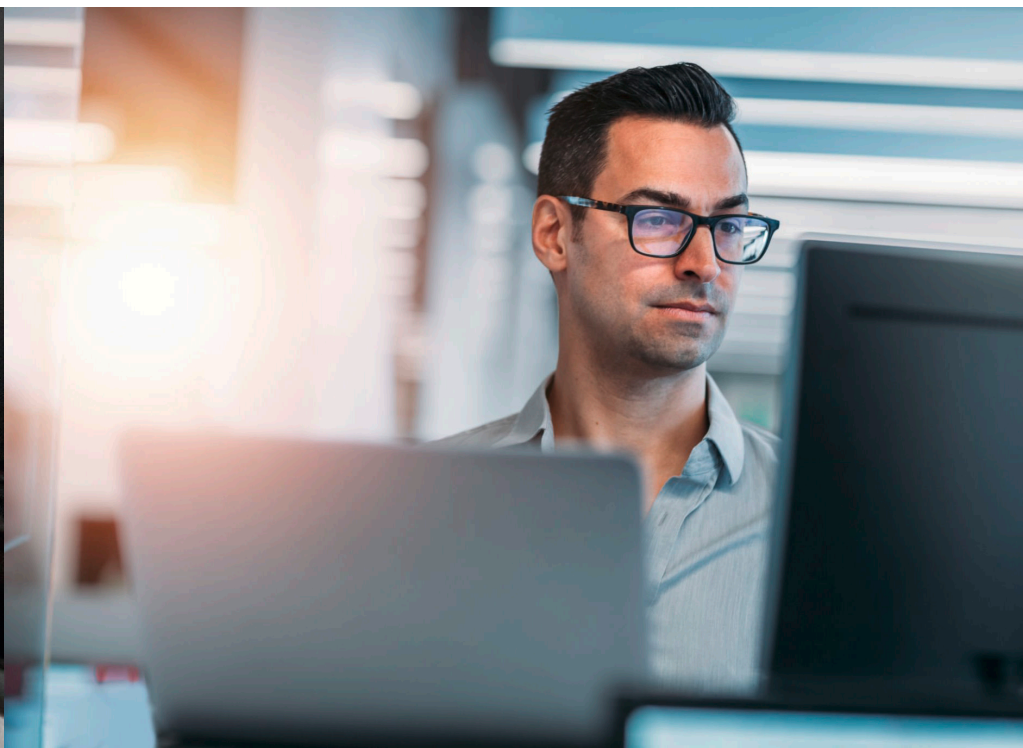
Memories

Transparency

History

\* Reader via NFC or BT

\* Gateway via Bluetooth



Why eltimon?

**eltimon is secure.**

**eltimon is easy to use.**

**eltimon is compact.**

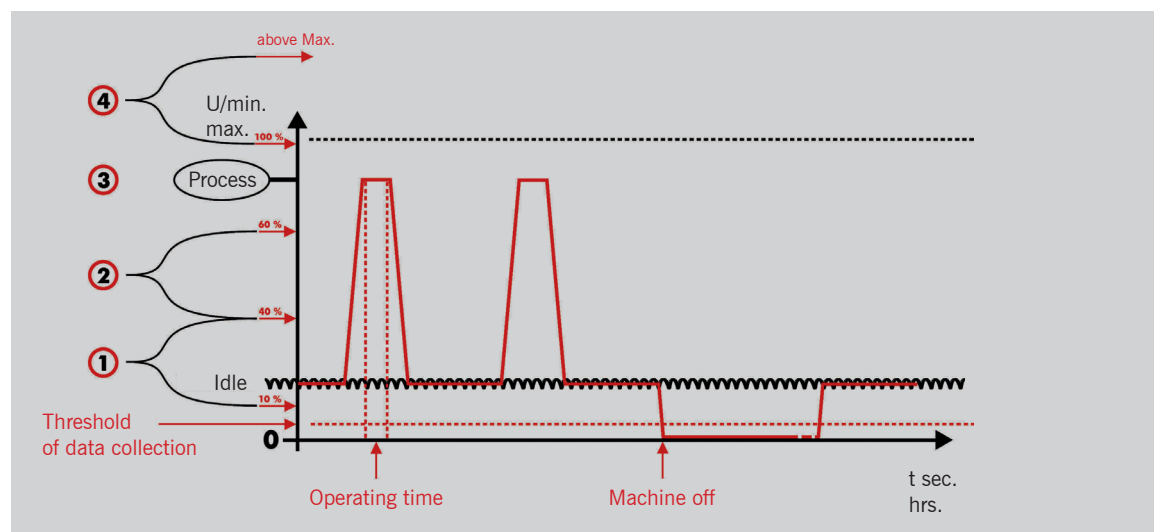
**eltimon is smart (IIoT).**

**eltimon is frugal.**

**eltimon is robust.**

**eltimon is sustainable.**

**eltimon is complete.**



# eltimon in a Nutshell

## Secure

- Protection against unauthorized access
- Clear tool assignment
- All data anonymized
- 5-year hardware warranty

## User friendly

- Data is generated and saved fully automatically – in the tool!
- Fully automated transfer to the service portal
- Service portal management console for evaluations and analyses
- Intuitive, structured user interface
- Access anytime, anywhere

## Compact

Smallest sensors and Bluetooth/NFC chips allow a very compact and form-fitting design.

## Smart (Industry 4.0 / IIoT)

- eltimon integration in machine (Pro)
- Data usable for virtual factory
- Preventive maintenance control
- More transparency in production process

## Frugal

- Catch back technology for Deep sleep/ Fast wake-up
- Up to 5 years without battery change

## Robust

- Very break-resistant composite material
- Extremely wear-resistant
- Completely resistant against flying chips
- Permeable for data transfer

## Sustainable

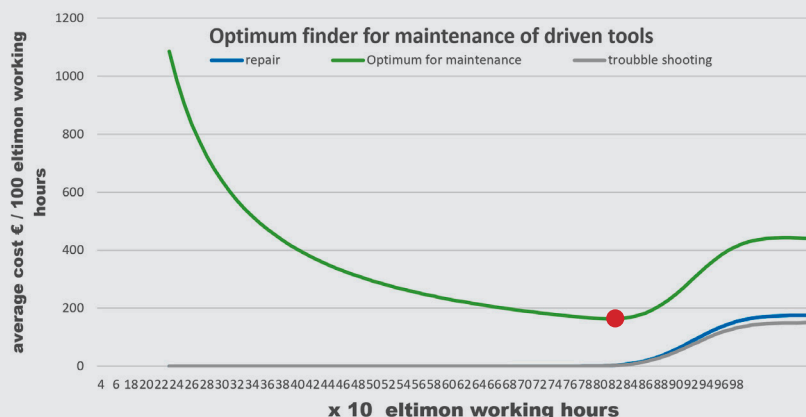
- Extends tool life
- Reduces material consumption and production waste
- Minimizes maintenance and spare parts
- Stabilizes the entire production process
- Saves standby tools

## Complete

From the sensor to the service portal, all components from a single source.

## Open

eltimon is an open, non-proprietary system.



## Optimal

## maintenance time

Determined by eltimon.  
A before or after would increase costs unnecessarily.



Wireless Sensor Control and Entire Ecosystem

# Free Your Tool Monitoring



mimatic GmbH  
Westendstraße 3  
87488 Betzigau (Germany)

Phone: +49 (831) 5 74 44-0  
Fax: +49 (831) 5 74 44-90  
[info@eltimon.de](mailto:info@eltimon.de)

  
**eltimon**®

[www.eltimon.de](http://www.eltimon.de)