

Wireless Sensor Control and Entire Ecosystem

Free Your Tool Monitoring



Cost Advantage
Maintenance
Efficiency
Manpower
Tool life
Crash prevention

www.eltimon.de



INDUSTRY
4.0

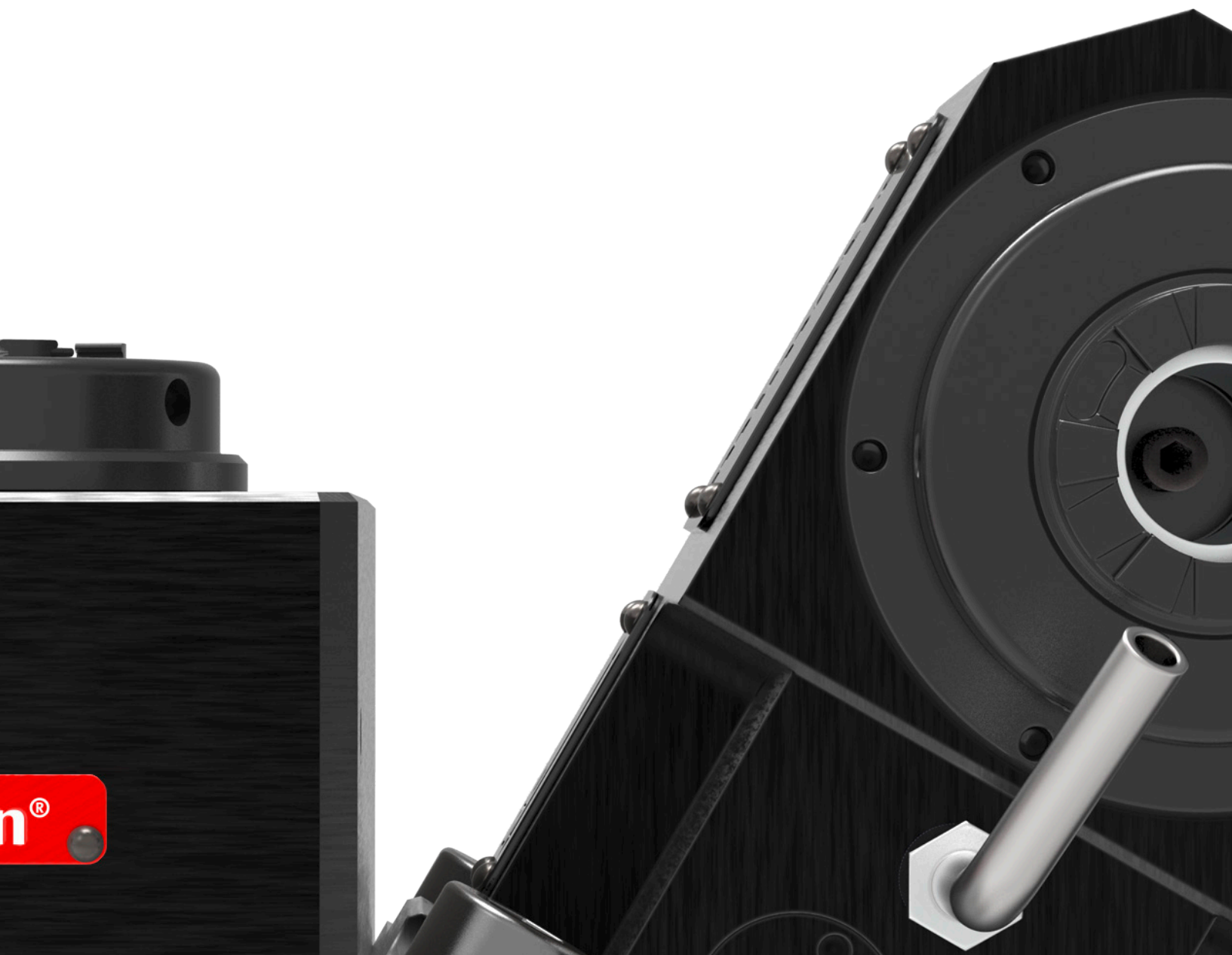
Wireless Sensor Control and Entire Ecosystem

Free Your Tool Monitoring



The complete system
for the digitization of
Live tools, angle heads
and driven tools.





Digitization for Complete Tool Management

Highly Integrated Sensor System for Most Effective Productivity



Wireless data transfer*
directly via eltimon Reader
or eltimon smart gateway to
the eltimon® service portal
and/or to the machine.



Proactive Action Instead of Expensive Reactions

Process Data Acquisition and Evaluation



Basic Data

Detailed information of the used tool



Revolution Informations

Detailed usage values and recorded speed ranges



Operating Hours

Accumulated operating hours since tool use



Load Cycles

For example the number of holes drilled



Tool Temperature

with limit warning for critical areas

 **eltimon**[®]

eltimon[®] ecosystem

Evaluations

Analyses

Trends and conditions

Limit warnings

Decision support

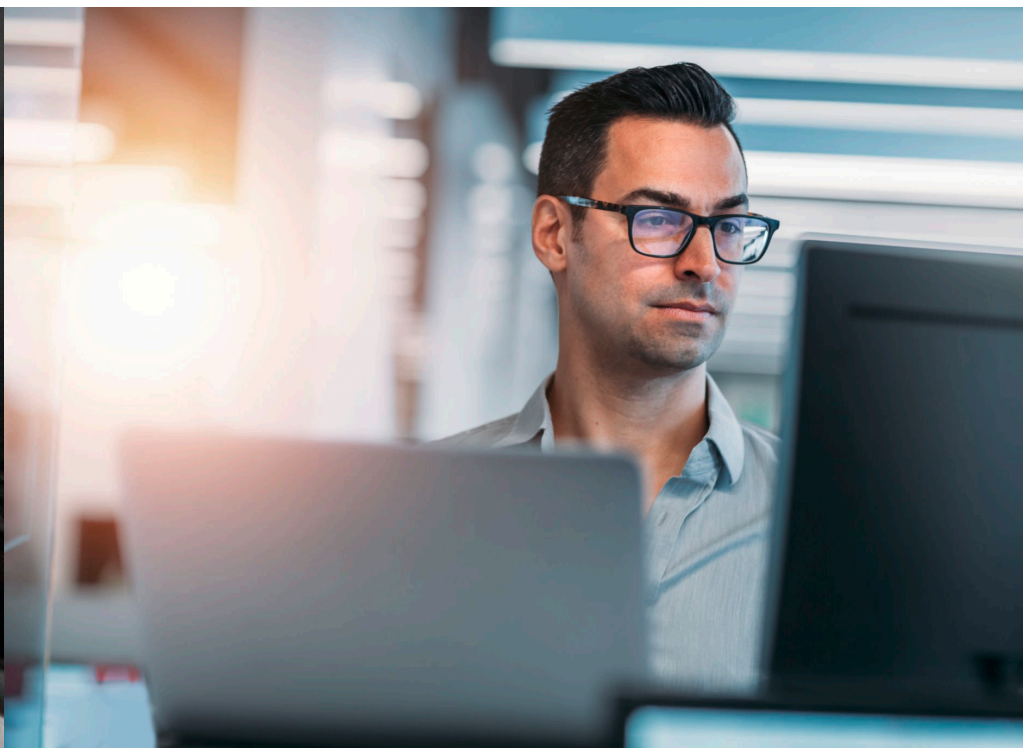
Memories

Transparency

History

* Reader via NFC or BT

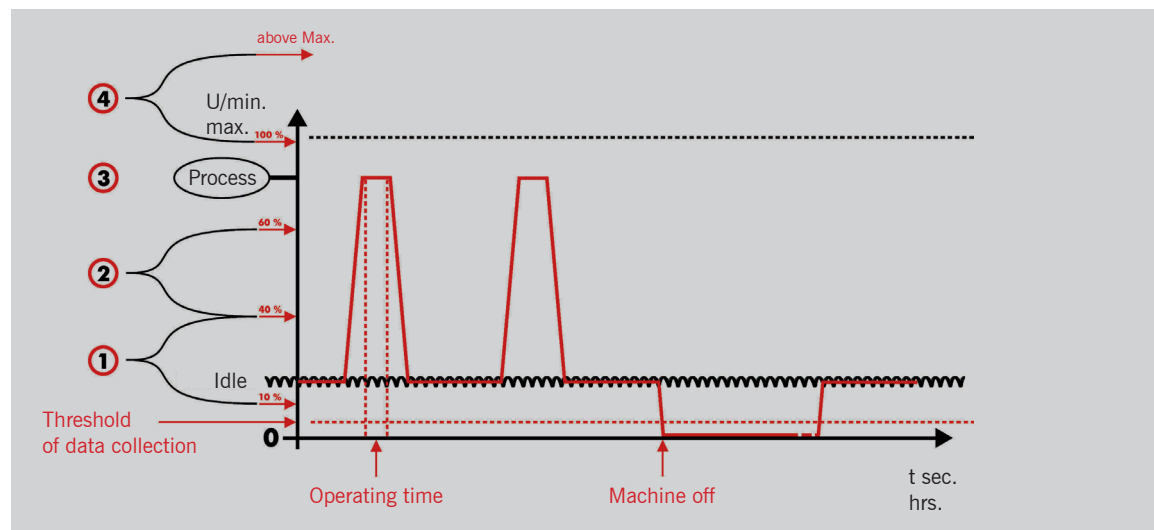
* Gateway via Bluetooth



Why eltimon?

eltimon is secure.
eltimon is easy to use.
eltimon is compact.
eltimon is smart (IIoT).
eltimon is frugal.
eltimon is robust.
eltimon is sustainable.
eltimon is complete.

eltimon
Data structure



eltimon®

eltimon in a Nutshell

Secure

- Protection against unauthorized access
- Clear tool assignment
- All data anonymized
- 5-year hardware warranty

User friendly

- Data is generated and saved fully automatically – in the tool!
- Fully automated transfer to the service portal
- Service portal management console for evaluations and analyses
- Intuitive, structured user interface
- Access anytime, anywhere

Compact

Smallest sensors and Bluetooth/NFC chips allow a very compact and form-fitting design.

Smart (Industry 4.0 / IIoT)

- eltimon integration in machine (Pro)
- Data usable for virtual factory
- Preventive maintenance control
- More transparency in production process

Frugal

- Catch back technology for Deep sleep/ Fast wake-up
- Up to 5 years without battery change

Robust

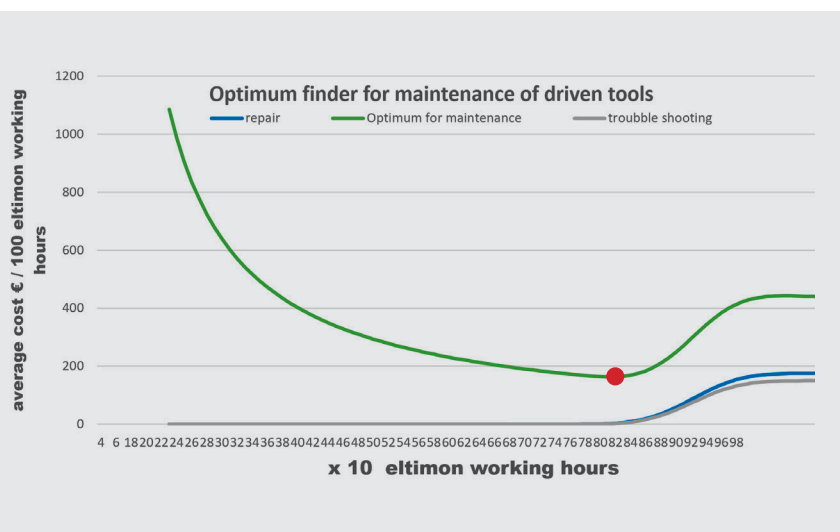
- Very break-resistant composite material
- Extremely wear-resistant
- Completely resistant against flying chips
- Permeable for data transfer

Sustainable

- Extends tool life
- Reduces material consumption and production waste
- Minimizes maintenance and spare parts
- Stabilizes the entire production process
- Saves standby tools

Complete

From the sensor to the service portal, all components from a single source.



Optimal

maintenance time

Determined by eltimon. A before or after would increase costs unnecessarily.

Wireless Sensor Control and Entire Ecosystem

Free Your Tool Monitoring



mimatic GmbH
Westendstraße 3
87488 Betzigau (Germany)

Phone: +49 (831) 5 74 44-0
Fax: +49 (831) 5 74 44-90
info@eltimon.de

eltimon®

www.eltimon.de